



Life not limits



Annual
Impact Report
2023-2024

Acknowledgement of Country

In the spirit of reconciliation, MSWA acknowledges the Traditional Custodians of the many lands and language groups of Western Australia and their connections to land, sea and community. We pay our respect to their Elders past and present, and extend that respect to all Aboriginal and Torres Strait Islander peoples today.

2023 MSWA Ocean Ride - Powered by Retravision
Credit: West Beach Studio.



Contents page

From our Chair and CEO	2
Our neuro community	4
MSWA at a glance	6
Our strategic focus	7
– Community Capability and Engagement	8
– Innovative Coordinated Care	11
– Translating Research into Outcomes	14
Financial highlights	18
Looking ahead	19
Our team	20

A message from our Chair and CEO

A year of refocus and connection

This last 12 months seems to have gone so fast, it's hard to cover everything that has happened, but we have come a long way in reconnecting with our community and embracing co-design. We still have so much further to go, but I do believe we have our sights set on the correct horizon and together we will get there as an organisation for and with people with neurological conditions.

A significant part of this shift has been our new brand **Life not Limits** is centered on the very people we exist to support. MSWA Clients, Susan and Chris epitomise the desire to embrace life, to not focus on the limits and to live their best lives. Bringing our community into our advertising, lottery draws, fundraising and events (such as the *Art Without Limits* exhibition), and collaboration with the Client Advisory and Co-Design Committee, has brought **the MSWA spirit back into everything we do** and every decision we make. We look forward to doing even more of this and thank all of our Clients and community members who have and will work with us to do this.

On the research fund, we have once again **invested a record \$5.6M in research and have seen some significant progress in improving lives and outcomes.** In 1979, Australians born with MS faced a mortality rate twice that of the general population. Today, Australians with MS can expect to live as long as those without the condition. This stands in contrast to other countries like New Zealand, where the average lifespan for people with MS is 7.2 years shorter, and the mortality rate is 1.9 times

higher than the general population. We are also seeing people being diagnosed with MS over a year earlier.

The focus of research going forward is to continue to find ways to diagnose MS as early as possible by identifying or creating drugs that can slow or stop progression and repair damage. On top of this, we will continue to support initiatives that can improve the quality of life for people with neurological conditions from diet and lifestyle to support factors. **The multi-year-PLATYPUS project is a leading light in this area** and is due to kick off with participants in late 2024.

The \$43M donated to research in the last decade would not have been possible without the support of the WA community through lottery tickets and donations. All of this has been done in a tough financial year - where the cost of living crisis has placed pressure on our Clients, our community and our fundraising. It's not an easy time, it's not an easy sector and it keeps getting tougher. We wouldn't be able to do it without our lotteries and the kind support of everyone who buys a lottery ticket and fundraised for our cause.



Horst Bemmerl
Chair



Melanie Kiely
Chief Executive Officer

You truly do change lives for the better, so thank you.

On the service front, we have heard loud and clear that we need to support our community and Clients first, with funding conversations to follow. Despite our amazing teams providing care to 2,335 Clients - an increase of 5.7 per cent - as a sector, we have lost our way a little in the machinery of the NDIS and making that work. We are a provider of supports *via* the NDIS, aged care and other funding mechanisms and we need to empower our frontline teams to do just that. **Our goal is to connect, listen and support in a way that is driven, first and foremost by our Client's needs, and not by a funding mechanism.**

We have seen the **Shenton Park Montario Quarter** development commence after turning the soil with the Minister, and the Department of Health in May 2024 and look forward to moving the Quad Centre residents and new Clients into the 20-unit state of the art facility when it is completed at the end of 2026.

As we look ahead to the next year, our strategic priorities reflect this, with a focus on our **Community Capability and Engagement**, followed by **Innovative Coordinated Care**, and lastly **Translating Research into Outcomes**.

By working together on what is needed in each area, we hope to come up with new models to deliver longer, better quality of life and improve life outcomes that is guided by the input and support of our community.

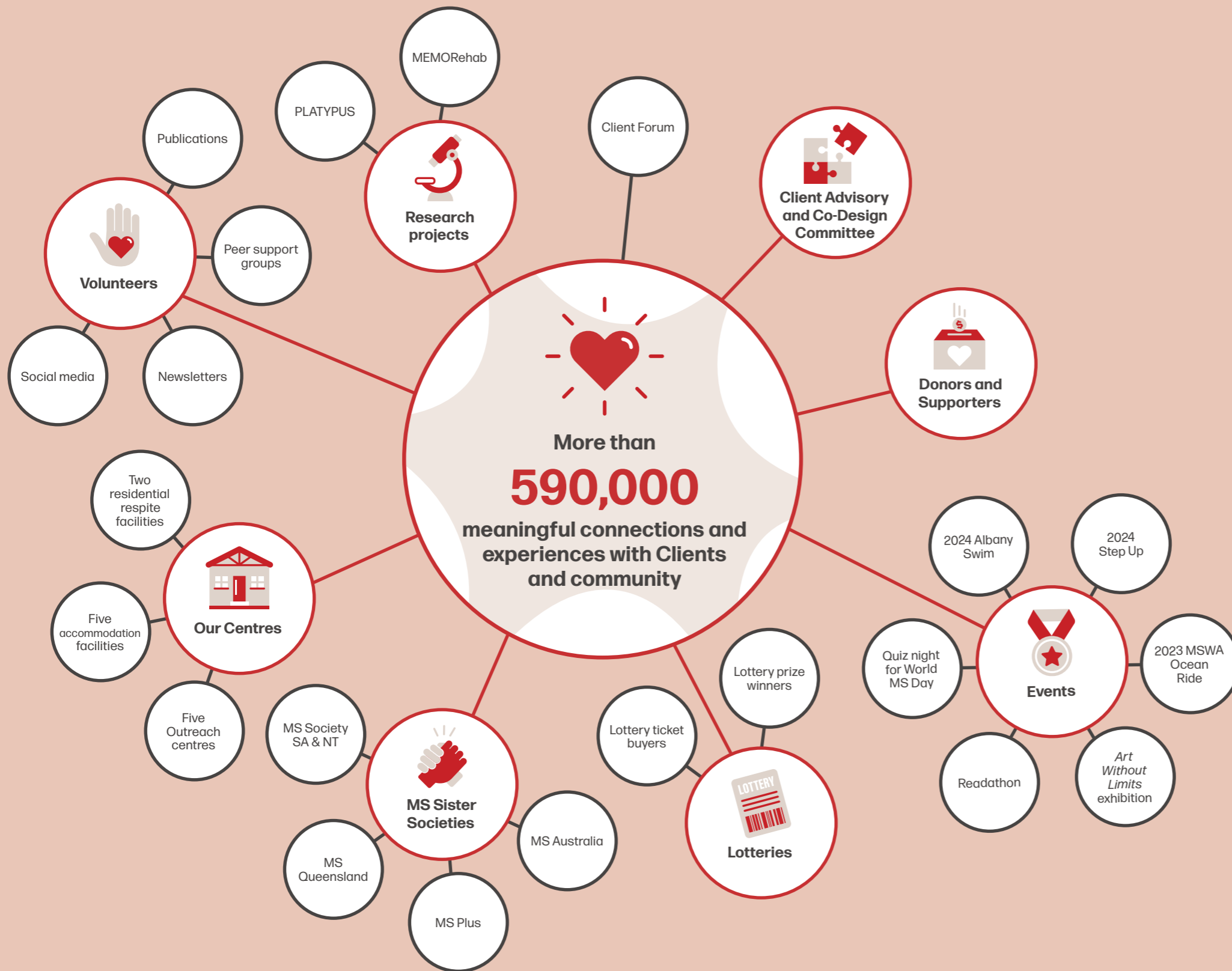
In closing, we would once again like to thank our community, partners, funders, volunteers, research organisations, supporters and last but not least, our Board who volunteer their time to support the community and purpose of MSWA.

We hope that wisdom grows each year as we co-create, and problem solve together as a community. Thank you all for your ongoing trust and support.

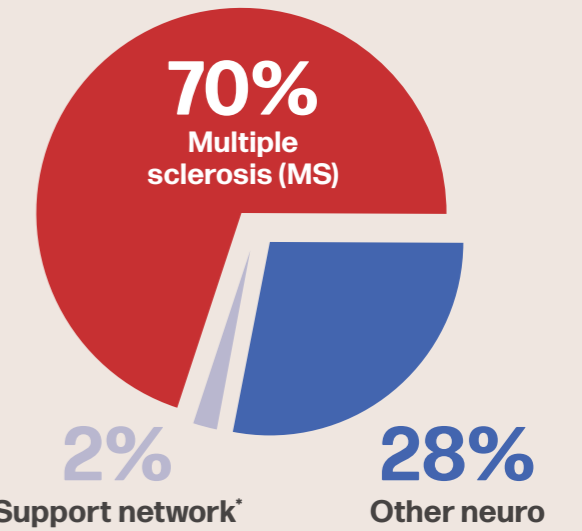
Horst Bemmerl
Chair

Melanie Kiely
Chief Executive Officer

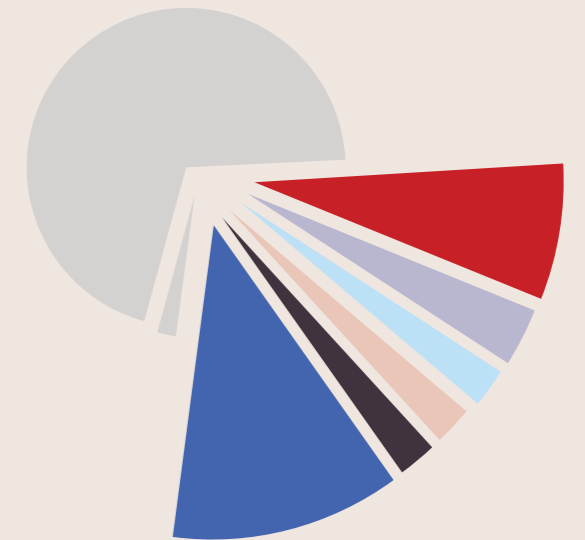
Our neuro community



Our Clients



*This represents people such as carers or family members utilising services such as Counselling in relation to those with neuro conditions.



Other neurological conditions

If we look a little deeper into MSWA's Client group, we support a range of other neurological conditions.

- Parkinson's disease 7%
- Stroke 3%
- Motor neuron disease 2%
- Acquired brain injury 2%
- Huntington's disease 2%
- Other neuro 12%

Our values

Respect

We care and we treat everyone with respect.

Listen

We listen and seek to understand.

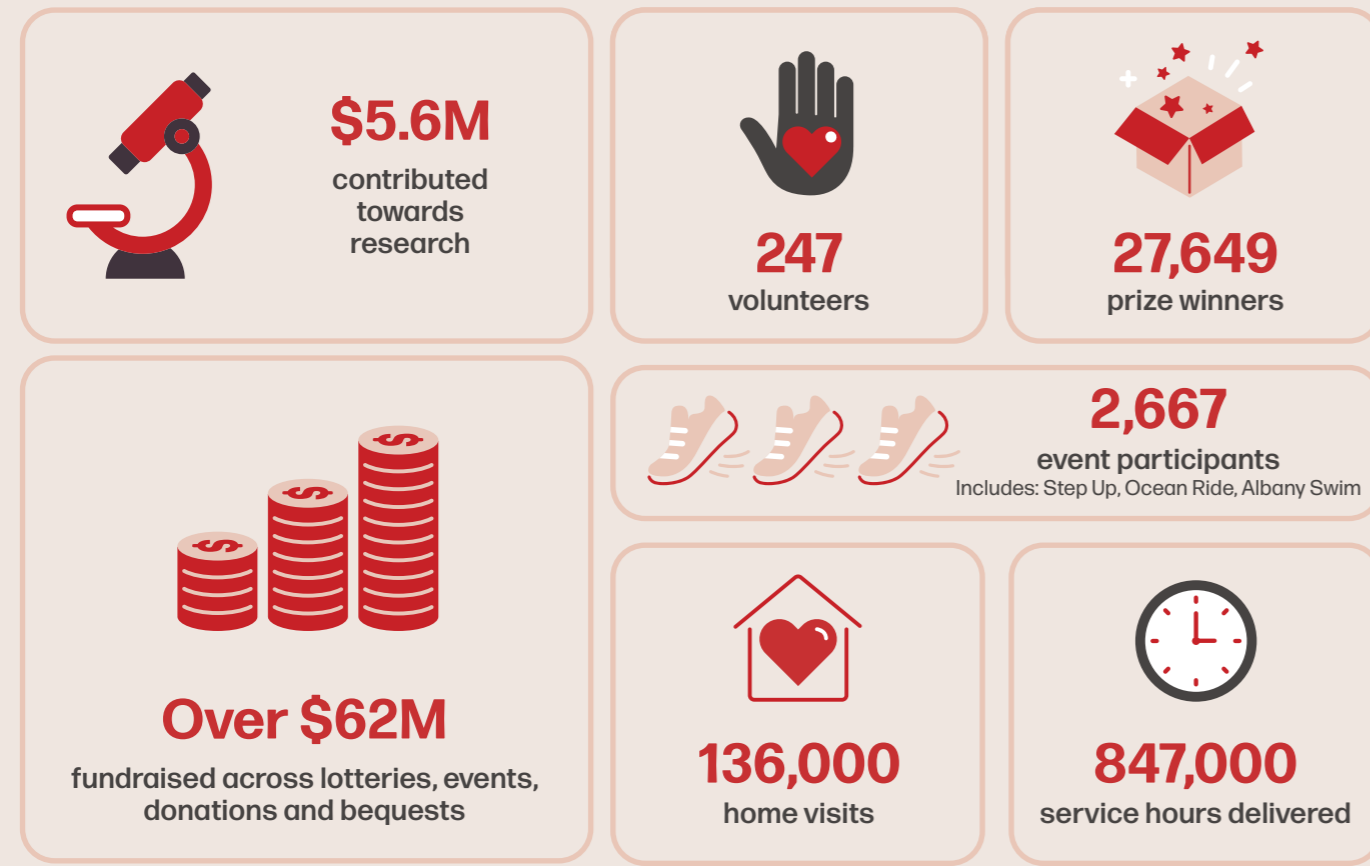
Difference

We value difference and everyone's perspective.

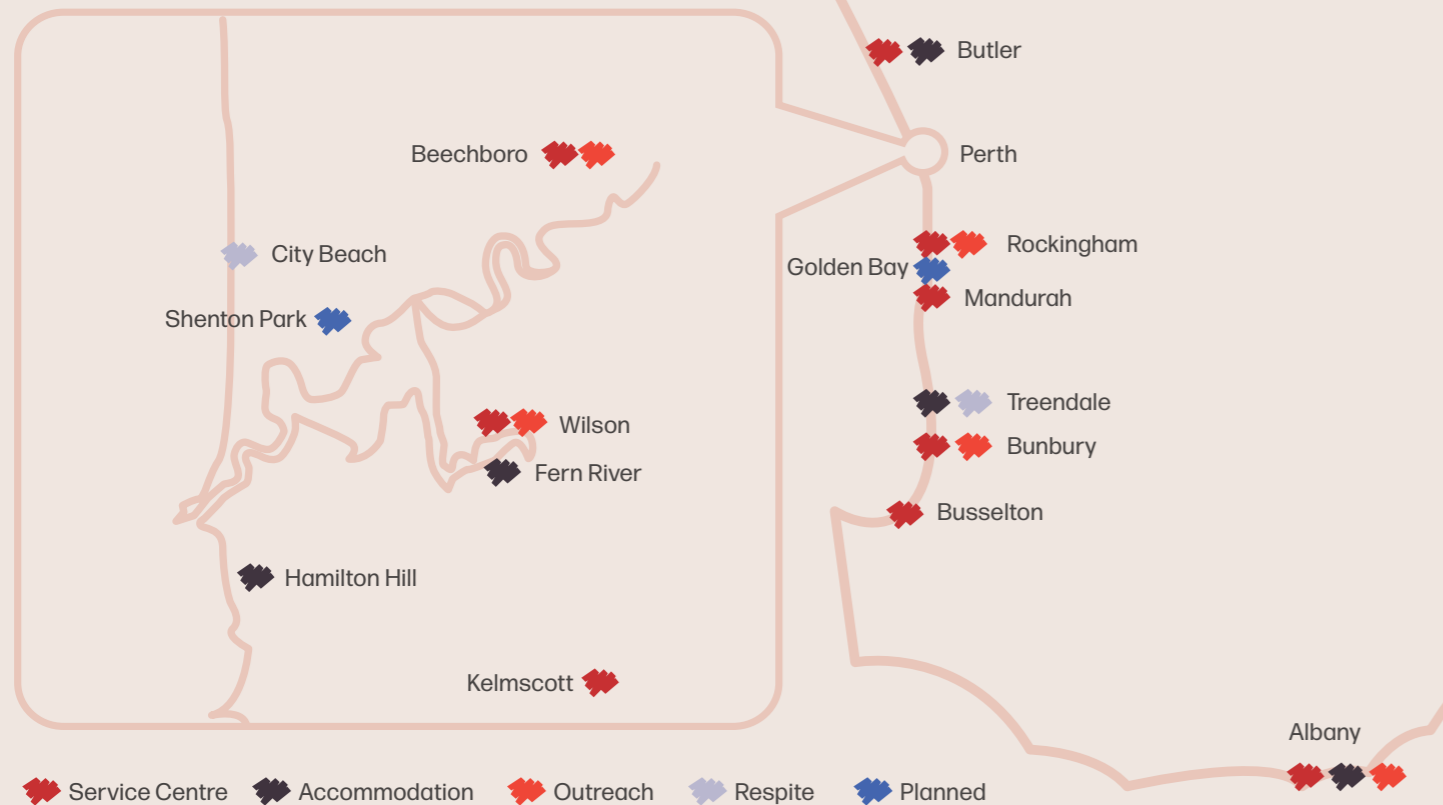
Accountability

We do what we say we will do, and we do it in the right way.

MSWA at a glance



Our Footprint



Our strategic focus

Many Australians with neurological conditions face a decline in their quality of life and daily functioning that could be prevented or avoided.

This is the reason that MSWA exists, and we believe we can address this need through specialised, coordinated care and support throughout life to remove or reduce limits of people with neurological conditions.

MSWA's Five-Year Strategy for 2025-2029 aims to empower people living with neurological conditions to

live their best lives. Our strategy is designed to be both visionary and flexible, ensuring that we can swiftly adapt to industry changes and market dynamics.

The Five-Year Strategy is underpinned by **our key levers for impact** which guide our decision-making in creating the most impact and difference to the community*:

- **Community Capability and Engagement**
- **Innovative Coordinated Care**
- **Translating Research into Outcomes**

Community Capability and Engagement

Getting back to our roots as a community for, with and by people with neurological conditions.

- A clear view on what 'community' means to us, our Clients and their carers.
- A community offering that reflects this and is valued.
- Relationship and community-based fundraising models.
- Corporate philanthropy and social investment models.
- Peer support models that empower Clients and carers to manage their own journey.
- True co-design in all areas to drive better outcomes.

Innovative Coordinated Care

Looking at new and improved co-designed models that drive even better outcomes for our Clients and community.

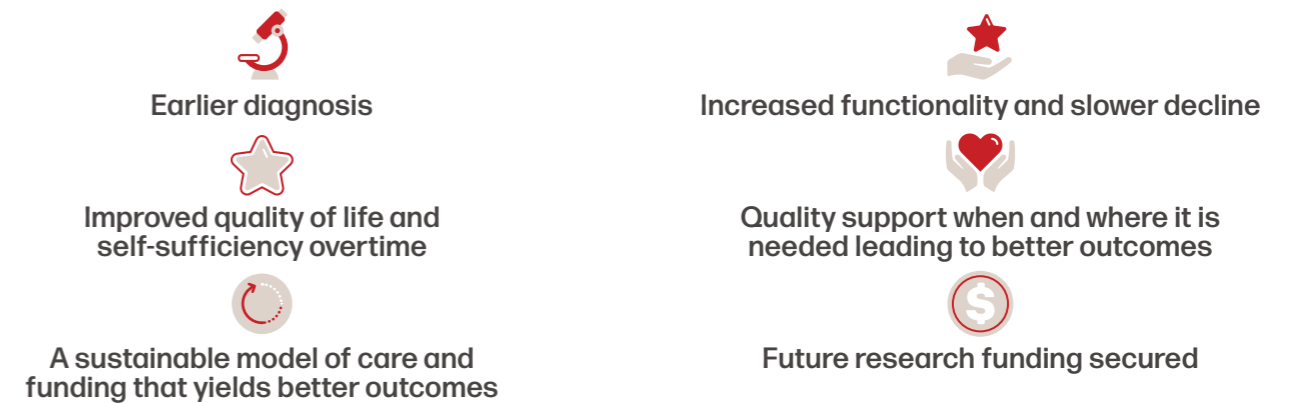
- Home and community care as an area of expertise.
- Our capability to leverage technology to keep people in place and to deliver better care.
- The ability to attract and retain a competitive workforce and maintain Client/carer continuity.
- The ability to adjust models to reflect research, best practice and co-design input.
- To work with the clinical and social community to delivery more coordinated care models.

Translating Research into Outcomes

Truly using our investment in research to change people's lives and their health outcomes for the better.

- Investment focused on outcomes.
- Co-design, participation and translation.
- Co-investment models to leverage greater input.
- Ongoing insights into research gaps.

Through our key levers for impact, we hope to achieve the following outcomes for people with neurological conditions:



*Community refers to MSWA Clients, their carers, people with neurological conditions, and our supporters (including volunteers, corporate partners, donors, our team, and other stakeholders who provide support and empower people with neurological conditions to lead fulfilling lives).

Community Capability and Engagement

Through our Community Capability and Engagement activities, we aim to build, support and nurture our neuro community, while continuing to listen, consult and collaborate with Clients and their carers.

Client Advisory and Co-Design Committee

Established in May 2023, the *Client Advisory and Co-Design Committee* is a formal mechanism for members of the community; MSWA Clients and their carers, to provide input into MSWA's Client services and service delivery designs.

Committee contributions inform MSWA's decision-making to enhance Client experience and deliver positive community impact.

Projects that the Committee actively consulted on and co-designed with MSWA include;

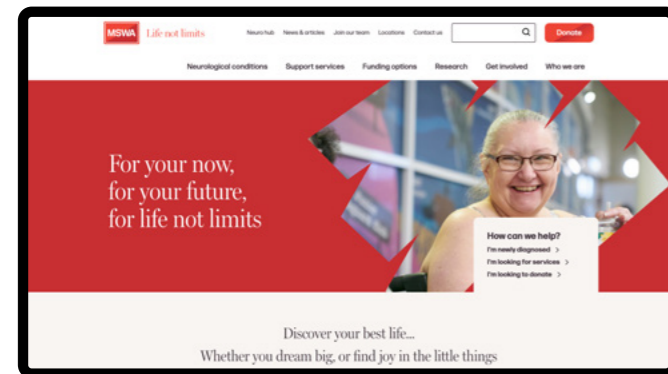
- Client Cancellation Policy
- Client communications strategies
- MSWA website refresh
- Review of massage services

Art Without Limits exhibition

MSWA's inaugural *Art Without Limits* exhibition consisted of three opportunities for our talented Clients to showcase their artwork, connect with each other and engage with the wider community - shifting perceptions of disability in public spaces.

The exhibition opened at the MSWA Mega Home Lottery Grand Prize home, was then moved to MSWA Wilson, and finally shown in the foyer of Central Park Towers during the week of World MS Day. An estimated 10,000 people across WA had the opportunity to view the exhibition across all events.

A morning tea event was held with Clients on World MS Day at Central Park Towers, where members of the public could meet the artists, increase their awareness of MS and other neurological conditions, as well as demonstrating how our Clients embody *Life not limits*.



The new MSWA website.

"Sometimes we are defined or bookended by our condition, sometimes that's a visible thing and sometimes not so. This exhibition says something very different... we have these avenues to express ourselves away from our condition, even though it may describe our journey. I think it is really valid and special."

- Hank Gidney, MSWA Client.



Hank Gidney at the MSWA Art Exhibition on display at the MSWA Mega Home Lottery Grand Prize home.



Art Without Limits exhibition held on World MS Day. Cr. West Beach Studio.

A splash with a difference

MSWA Albany Swim

The Great Southern community came together for the 12th annual *MSWA Albany Swim* fundraising an astounding \$29,000 for people with neurological conditions. *Team Marines* were the Highest Team Fundraisers, contributing over \$12,000, while Rechelle Wright was recognised as the Highest Individual Fundraiser, raising over \$3,000. MSWA Client, Tania Barclay also took part in the event, clocking in laps along the poolside on her powered wheelchair.

Highlights from the event include

- The 1000th swimmer making a splash
- 81 swimmers in total
- 8,510 laps completed by eight teams in eight hours!

"This is a fantastic event. The community comes together, we bond for the cause, and it is really fun!"

- Marina Pietropalo, MSWA Client.



Marina Pietropalo (left) with Team Marines. Cr. West Beach Studio

Community Capability and Engagement

Outcomes

Initiatives

	<p>Client Advisory and Co-Design Committee Our Client Advisory and Co-Design Committee have been actively involved in numerous projects across the wider MSWA organisation.</p>
	<p>Community Activations <i>Inaugural Art Without Limits Exhibition</i> <i>Quiz Night for MS Day</i> Clients, families, carers and MSWA team members came together for a night of friendly competition. <i>Perth lights up for World MS Day</i> Iconic landmarks and bridges across Perth lit up in red to celebrate World MS Day and increase awareness of our cause.</p>
	<p>Corporate Partnerships <i>State Buildings and MSWA Partnership</i> MSWA's first official partnership with State Buildings was a significant milestone for our respective organisations, driven by a shared goal to positively impact the WA community.</p>
	<p>Community Fundraising <i>2023 MSWA Ocean Ride - Powered by Retravision</i> <i>2024 MSWA Albany Swim</i> <i>2024 MSWA Step Up</i> <i>Lotteries and Raffles</i></p>
	<p>Outreach MSWA Outreach continues to provide a connection point for 180 Clients, with co-designed programs to ensure they meet Client needs, wants and goals.</p>
	<p>Peer Support Groups MSWA actively engages with and supports peer-led community groups, and respects the role they play in providing safe, supportive environments for connection, no matter where Clients are in their journey.</p>

Outcomes		
<p>Earlier diagnosis</p>	<p>A sustainable model of care and funding that yields better outcomes</p>	<p>Quality support when and where it is needed leading to better outcomes</p>
<p>Improved quality of life and self-sufficiency overtime</p>	<p>Increased functionality and slower decline</p>	<p>Future research funding secured</p>

Innovative Coordinated Care

For over five decades, MSWA has been supporting people with neurological conditions through fostering community connections and by providing essential health services. This unique position gives us a deep understanding of the challenges faced by people living with neurological conditions and allows us to address gaps in coordinated care that are often overlooked within the disability sector.

Breaking Ground at Montario Quarter

In May 2024, MSWA proudly announced the commencement of construction of Montario Quarter, with Quadriplegic Centre residents in attendance to mark the pivotal moment in this important community development.

With 20 state-of-the-art apartments, Montario Quarter will offer long-term, high support living options that promote independence in daily activities, with access to 24-hour care and top-tier support through MSWA's dedicated team of allied health and clinical professionals.

MSWA's \$12.8M investment, along with a \$14M grant from the Department of Health, brings the total investment in this long-awaited project to \$26.8M. Current Quadriplegic Centre residents will be consulted throughout the build to ensure it is a place they are proud to call home.

"We pride ourselves on listening to residents, staff, and visitors, making changes that work best for everyone's needs."

"This continuous cycle of improvement makes MSWA accommodation better than the typical standards. Passive building elements and assistive technology will be a welcomed convenience for Quad Centre residents, as will the landscaped gardens within and surrounding their new homes."

- Steve Corbett, MSWA Manager Property Development and Construction.



(L-R) Quad Centre Residents with Minister for Health Amber-Jade Sanderson and MSWA CEO Melanie Kiely. Cr. Rebecca Johansson

Expansion of allied health services

We're proud to have introduced a range of evidence-based allied health services during the 2023-24 financial year to meet our Clients' needs and help reduce the barriers they face –whether physical or mental.

New services include:

- Low-Cost Assistive Technology Workshops**
 Recognising a gap in our Clients' knowledge, MSWA's Occupational Therapy team hosts regular workshop to increase understanding of low-cost assistive technologies, their practical applications in daily life, and where these items can be sourced.
- Massage accessibility**
 Understanding the value of our massage services to Clients and through consultation with our Client Advisory and Co-Design Committee, MSWA now covers half of the fee-for-service rate for eligible Clients.
- MEMORehab**
 Memory Rehabilitation or MEMORehab is an evidence-based cognitive program delivered by MSWA's Occupational Therapy team to enhance an individual's attention and memory to improve daily functioning.
- Vestibular Physiotherapy**
 This form of physiotherapy is designed to assess and treat vestibular system disorders, to alleviate vertigo and a range of symptoms to reduce the risk of falls.
- Wellbeing**
 Designed for Clients seeking to improve their overall wellbeing without pursuing traditional therapy, MSWA's Wellbeing service offers psycho-education modules focused on building resilience.



MSWA Client Max* was the first to receive Tysabri® treatment at an MSWA service centre and was ecstatic with the convenience. The entire appointment took just an hour in a relaxed atmosphere, a welcome change from the busy hospital setting.

*The Client's name has been changed to protect their privacy.

First MSWA Client to receive Tysabri® treatment at MSWA service centre.

"Mel has the natural ability in making someone feel accepted, feel normal. She treats you with respect and dignity."

- Debbie Evans, MSWA Client.

Support Worker Mel Cooper, National Disability Award 2023 Honour Roll, with Client Debbie.

Innovative Coordinated Care

Outcomes

Initiatives



Accommodation and respite renovations

Improvements include modernised kitchens, updated living areas, and refreshed landscaping.



Montario Quarter

Construction of Montario Quarter commenced in Shenton Park.



Improved access to Tysabri®

MSWA nurses can now administer Tysabri®, a Disease Modifying Therapy (DMT) for MS, across our service centres. Traditionally given in a hospital setting, this treatment is now available as a subcutaneous injection administered by a healthcare professional.



New Allied Health Services

Introduction of five new Allied Health Services to address gaps in our offering and to continue providing quality of care for our Clients.

Outcomes



Earlier diagnosis



A sustainable model of care and funding that yields better outcomes



Quality support when and where it is needed leading to better outcomes



Improved quality of life and self-sufficiency overtime



Increased functionality and slower decline



Future research funding secured



Translating Research into Outcomes

For over a decade, MSWA has remained dedicated to advancing research in neurological conditions. Over this period, we have invested over \$43M in various research projects aimed at unravelling the mysteries of neurological conditions.

During the 2023-24 financial year, we invested a further \$5.6M, which would not have been possible without the support of the West Australian community through our fundraising initiatives.

We invest in a range of broad and diverse research projects including Genetics, Epidemiology, Neurobiology, and Social and Applied Research, all of which are essential to **improving the lives of those affected by neurological conditions.**




These research principles empower us to build on our research progress to date, improve our knowledge of neurological conditions, and most importantly, ensure new information is translated into practice in Western Australia, nationally and globally, so that all can live life without limits.

Our research principles:

-  **Encourage co-design and participation by the MS and other neurological conditions community**
-  **Foster collaboration amongst researchers, industries, organisations and Government for short and long term continuity and coordination**
-  **Strive for equitable outcomes for all Australians**
-  **Translation of findings to the community and into practice for better health outcomes**
-  **Demonstrated benefit for the community and sector**
-  **Building capacity in Western Australia**
-  **Greatest potential promise to make meaningful impact**
-  **Transparency and excellence in research and translation**
-  **Innovative and creative models of research to yield better outcomes**

Moving the dial

Through the combined efforts of research institutions, MS organisations and the support of Australians to the MS cause, we're moving the dial on...

-  **Early diagnosis**
The average time from the experience of first symptoms to diagnosis has reduced from 5 years in 2000 to 3.9 years in 2021.
-  **Better treatments**
Due to better treatments, average time from MS onset to progressive MS has increased from 15 years to 30 years over the last two decades.
-  **Mortality**
In 1979, Australians born with MS faced a mortality rate twice that of the general population. Today, Australians with MS can expect to **live as long as** those without the condition.



PLATYPUS

The first of its kind in Australia, the \$4M trial known as **PLATYPUS** will provide a new hope for people living with progressive multiple sclerosis (PMS), a form of MS which increases in severity over time.

The flexible nature of the multi-arm, multi-stage (MAMS) adaptive design will allow researchers to investigate the potential benefits of several existing medications simultaneously. This means results can be produced faster than traditional clinical trial methods.

The PLATYPUS trial will be rolled out across Australia through a collaboration of 20 academic and healthcare institutions and aims to recruit more than 250 participants in Australia.

“What is so exciting about PLATYPUS is that people living with MS, like myself, often say ‘a cure won’t happen in my lifetime’ due to the time required to bring new medications to market.

PLATYPUS is different, as it’s using existing medications that have potential to treat PMS. Because they have already been tested, they can be fast-tracked,”

- Horst Bimmerl, MSWA Chair.



Our research contributions

		Diagnosis, early detections and causes	Protect against and slow progression	Repair and regeneration of cells	Improving lifestyle and wellbeing	Multiple sclerosis (MS)	Parkinson's disease (PD)	Motor neuron disease (MND)	Stroke	Alzheimer's disease	Other neuro conditions (other NC)
Genetics and epidemiology	Perron Institute - Genomic Medicine Professor Sulev Kõks and Professor Anthony Akkari are identifying genes that have predisposition to neuromuscular and neurodegenerative diseases like MND and PD, then find therapies to block dysfunctional genes and reduce risk.	●					●	●			
	Telethon Kids Institute - Phototherapy for participants with Clinically Isolated Syndrome (PhoCIS) Dr Jonatan Leffler is examining the impact of UV therapy on the regulation of B-cells, a type of immune cell, and how it may delay MS onset.	●				●					
Neurobiology	MSWA and MSA - PLATYPUS A world-leading clinical trial will seek to reverse neurological damage caused by progressive multiple sclerosis (PMS) in Australians living with the condition.		●	●	●	●					
	Perron Institute - MS Demyelinating Group Professor Allan Kermode and Dr Marzena Pedrini are researching clinical profiles and biomarkers (biological signs) with the aim of identifying indicators of disease activity for different demyelinating diseases.		●	●		●					
	Perron Institute - Neuroplasticity Associate Professor Jenny Rodger is looking at non-invasive human clinical trials for stroke, depression and MS by using transcranial magnets.		●	●	●	●			●		
	Curtin University - (CHIRI) Clinical Intervention Trial in RRMS Professor John Mamo is investigating specific lipid nutraceuticals (a high fat diet intervention) with the aim to achieve remyelination.			●		●					
	Curtin University - Clinical Trial for Treating Dementia Professor John Mamo is looking into a new drug for Alzheimer's disease and other NC to improve cognitive function and/or slow down the decline. Repurposing a safe drug from heart conditions.		●	●						●	●
	Edith Cowan University - Systematic Profiling in Neurological conditions) SPIN and Mind Pod Professor Simon Laws is identifying markers in individuals to develop and deliver more targeted therapeutic interventions for stroke, Huntington's disease, PD, MS.				●	●	●		●		●

		Diagnosis, early detections and causes	Protect against and slow progression	Repair and regeneration of cells	Improving lifestyle and wellbeing	Multiple sclerosis (MS)	Parkinson's disease (PD)	Motor neuron disease (MND)	Stroke	Alzheimer's disease	Other neuro conditions (other NC)
Social and applied research	Perron Institute - Data Research Registry - MSBase Professor Allan Kermode is compiling national and international longitudinal data sets with clinical data including therapies, MRIs, and relapses.	●	●		●	●					
	Perron Institute - Trajectories of Outcome in Neurological Conditions (TONIC) Professor Sulev Kõks is looking at quality of life in a longitudinal study with patients living with MND (PD to follow) and identifying genetic contributors to MND.	●			●		●	●			
	Curtin University - Elucidating Diet in MS to improve disease outcomes Professor Lucinda Black is investigating dietary strategies for slowing MS progression and improving MS healthcare.		●		●	●					
	Curtin University - Ageing and Neurodegenerative Diseases Professor John Mamo is looking into linking PD, MND, and MS through lifestyle factors and potentially identifying interventions and treatments that may contribute to dementia prevention.		●		●	●	●	●		●	●
	Edith Cowan University - SPIN Extension Professor Simon Laws is leading several projects that have prioritised the perspectives of individuals with neurological conditions to facilitate personalised treatment and streamline service delivery.				●	●	●	●	●	●	●
	Neuro Research Data Hub Collaboration (Perron Institute and Edith Cowan University)					●					●



In addition to the research previously mentioned, an additional \$2.5M was contributed to the MS Australia grants. This funding is used to support a range of projects, please scan the QR code to find out more.

Financial highlights

Our finances

Project	FY 22/23	FY 23/24
Revenue	\$114M	\$112M
Expenses	-\$104M	-\$104M
Net gain/(loss) on financial assets at fair value	\$0.7M	\$0.6M
Surplus	\$11M	\$9M
Net assets	\$102M	\$111M
Net current assets	\$58M	\$56M
Investment in research	\$6M	\$6M

Investment of capital for the future (three years)



Montario Quarter renders.



Quad Centre Resident.

Looking ahead

Through research, listening to feedback and keeping our Clients at the core of everything we do, we will build on our activities across future years with the following projects, further supporting our key levers for impact.

Community Capability and Engagement

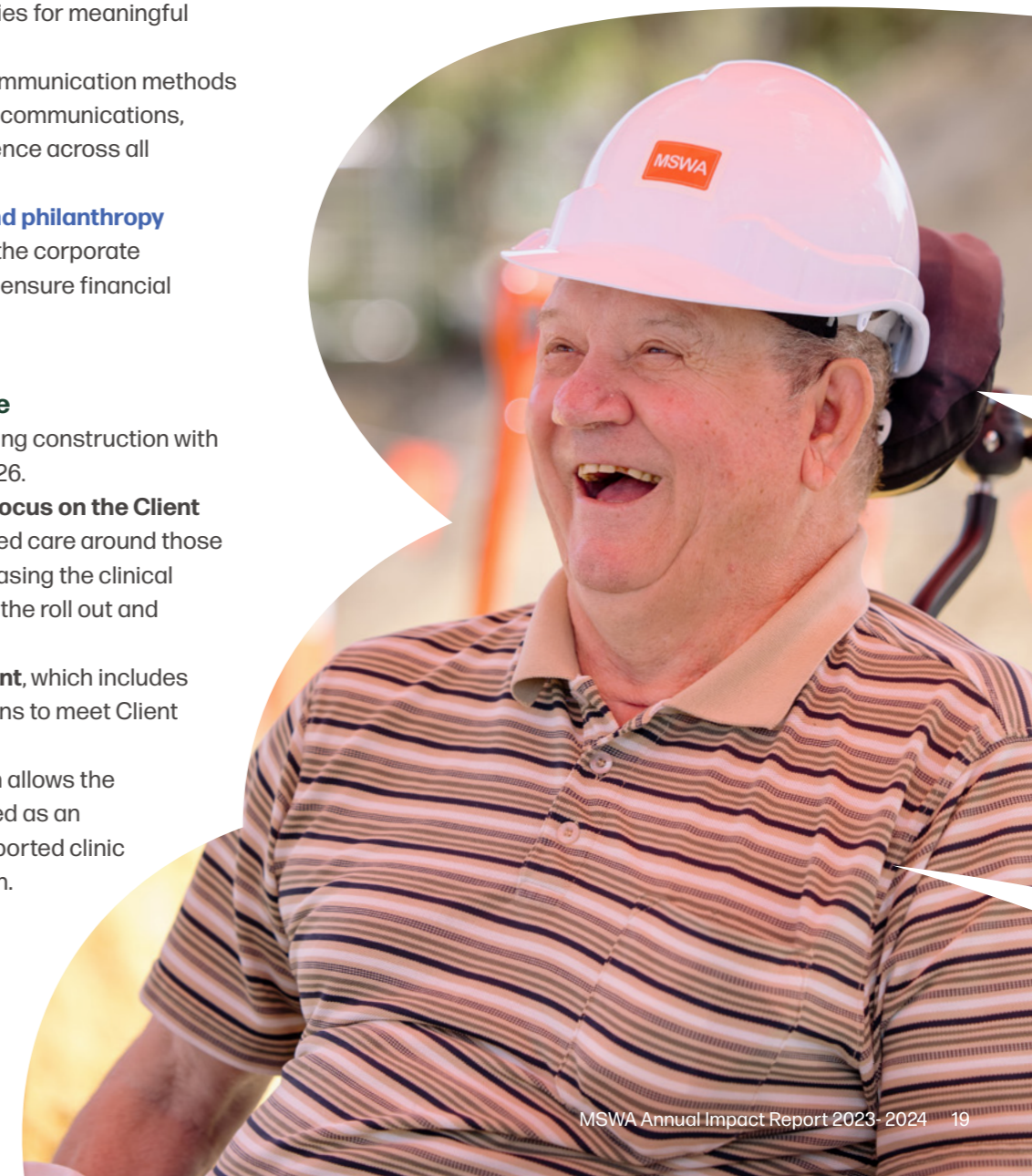
- **Addressing the gaps** - look at providing support and/or care to rural and remote areas, where there is a need, and where we can provide a sustainable model that yields positive outcomes, with a particular focus on underrepresented groups including indigenous, cultural and underfunded communities.
- **Community hub** - with consultation with our [Client Advisory and Co-Design Committee](#) and the wider neuro community, establish and build a strong community network with a revitalised peer support program, to enhance overall community engagement and opportunities for meaningful connections.
- **Communication** - review communication methods across Client and supporter communications, improving the overall experience across all interactions with MSWA.
- **Corporate partnerships and philanthropy** - building relationships with the corporate and philanthropic sectors to ensure financial sustainability in future.

Innovative Coordinated Care

- **Montario Quarter** - continuing construction with the aim to be complete in 2026.
- **Improving our services to focus on the Client need** and to provide integrated care around those needs. This will include increasing the clinical services available, including the roll out and promotion of:
 - **Continence management**, which includes personalised nursing plans to meet Client needs.
 - **Tysabri® injection**, which allows the medication to be delivered as an injection at a MSWA supported clinic rather than as an infusion.

Translating Research into Outcomes

- **Translation in research** - ensuring the latest research is shared with our Clients and community, of which it effects directly.
- **Sustainable models for investment** - future proofing our ongoing commitment to research by looking into commercial models.
- **Pooling resources to optimise outcomes** - selection process for research grants will be reviewed by MS Australia's (MSA) well-established expert panels according to [our research principles](#) and ensuring proper governance and placement for impact.



Our team

Our difference makers

The MSWA Difference Maker Awards honours and recognises members of our team who live out MSWA's purpose, vision and core values to provide the best care to our Clients. These individuals have been nominated by their peers and MSWA Clients.

Difference Maker of the Year

Oliver Guttinger

Exercise Physiologist

MSWA Difference Maker of the Year is nominated by our Clients for making a meaningful impact and embodying MSWA's values. Many Clients have praised Ollie for his expert guidance, along with his patient, empathetic and respectful demeanour. Ollie credits his 13 years working for MSWA to his amazing team and the Clients that inspire him every day.

"Ollie is brilliant in what he does, I always feel better after my sessions with him... he is a huge asset to MSWA."

- MSWA Client.



Oliver Guttinger.

Change Maker Award

Melissa Coombs

Senior Outreach Coordinator



Melissa Coombs and MSWA Client, Yvette D'Cruz.

Leading with Purpose Award (Team)

Rostering Team



MSWA Rostering Team.

The Chair's Impact Award

James Beckett

Physiotherapy and Exercise Physiology Services Manager

The Chair's Impact Award recognises a team member who has gone above and beyond to positively impact our Clients, our team and the wider neurological community. James has had a profound impact on the department, introducing fresh new initiatives and leading by example.

"James is an inspiration to his Clients and his team have nothing but admiration and praise for him."

- Horst Bemmerl, MSWA Chair.



(L-R) Fathima Mahmood, MSWA Physiotherapy Assistant and James Beckett.

Leading with Purpose Award (Individual)

Chanel Rikihana

Community Support Worker

Trailblazer Award (Individual)

Sandra Burton

Community Support Worker

Values Award - Accountability (Individual)

Robin Braccia

Quality, Safeguarding and Risk

Values Award - Difference

Abi Farrah

Care Support Award

Values Award - Listen

Donna Hogan

Community Support Worker

Values Award - Respect

Joseph Jangi

Maintenance/Handy Man



Joseph Jangi.

Nationally recognised

Our team is our greatest asset, and we're incredibly proud to see them recognised on a national stage for their expertise, dedication and passion in achieving positive outcomes for the neurological community.

Peta Flynn

Bright Star Award - Disability Employment Services
National CoAct Awards 2024

MSWA Specialist Employment Consultant, Peta, was recognised for her innovative approach of integrating evidence-based cognitive rehabilitation with high-quality vocational care to facilitate positive employment outcomes for Clients.

"With Peta's help, I have rebuilt my muscle strength, which has taken me from borderline wheelchair to standing again and working with tools."

- Peter Wells, MSWA Client.



Peta Flynn with MSWA Client, Peter Wells.

Randall Rooney

High Commendation, Excellence in Allied Health
National Disability Awards 2023

After recognising a need for his Clients, MSWA Clinical Team Lead and Lymphoedema Physiotherapist Randall Rooney, took it upon himself to expand his clinical knowledge through training. Working collaboratively with his peer Kim Jahnig, he developed and rolled out MSWA Lymphoedema service, which has already proven to have made an outstanding impact on Clients.

"He puts the time in, he knows how to get the best out of people. He is dedicated, makes you feel at ease."

- Graham Partridge OAM, MSWA Client.



(L-R) Graham Partridge, Randall Rooney and Robyn (Graham's wife).

Client Advisory and Co-Design Committee

- Gavin Harper - Chair
- Allen Donald Roberts
- Angelica Franz
- Ann Marie Linto
- Brooke Cuthbertson
- Ellen-May Eaton
- Irene Long
- Joanne Samer
- Jodi Russell
- Karen Gillies
- Michael Fay
- Terry Compton
- Wildaliz DeJesus Arocho



"The challenge is to provide timely input to a wide range of topics that represent the whole Client community. The reward is in the better outcomes for all."

- Gavin Harper, Chair of Client Advisory and Co-Design Committee.

Board of Directors



Horst Bemmerl
Chair



Liam Roche
Deputy Chair



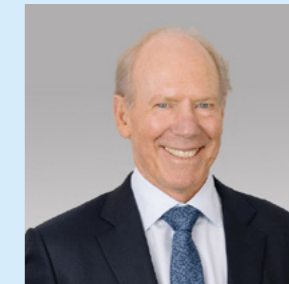
Benjamin Jardine



John Patmore



Jason Brotherson



Professor Bill Carroll AM



Michael Fay



Kate Gatti



David Jones

Executive Team



Melanie Kiely
Chief Executive Officer



Nicola Washington
Chief Client Operations Officer



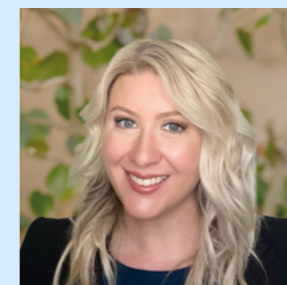
Julie Fairweather
Chief People and Culture Officer



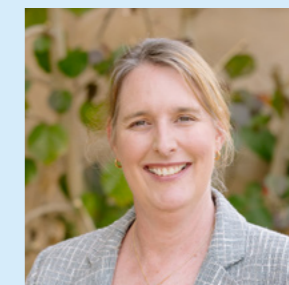
Simon Jennings
Chief Information Officer



Tony Millar
Chief Marketing Officer



Sian Sullivan
Chief Financial Officer



Alison Cox
Chief of Quality, Safeguarding and Risk

*Asanka Dissanayake, Chief Financial Officer (departed Sep 2023)

The logo for MSWA, consisting of the letters 'MSWA' in white inside a red square.

Life not limits

MSWA Limited
ABN: 75 638 080 972
ACN: 670 532 224

Registered Office
154 Abernethy Road
Belmont WA 6104

(08) 9365 4888
customerservice@mswa.org.au
mswa.org.au



@mswa



@m_s_w_a



@m_s_w_a



@mswa

*Kings Park lights up
red for World MS Day.
Cr. West Beach Studio.*